

Name: *Cacopsylla sorbi* (Linnaeus, 1758)

Synonyme: *Psylla sorbi*; *Cacopsylla (Thamnopsylla) sorbi*

Verbreitung: Bulgarien, Dänemark, Deutschland, Estland, Finnland, Grossbritannien, Irland, Italien, Lettland, Norwegen, Österreich, Polen, Russland, Schweden, Schweiz, Slowakei, Tschechische Republik; eingeschleppt in die USA

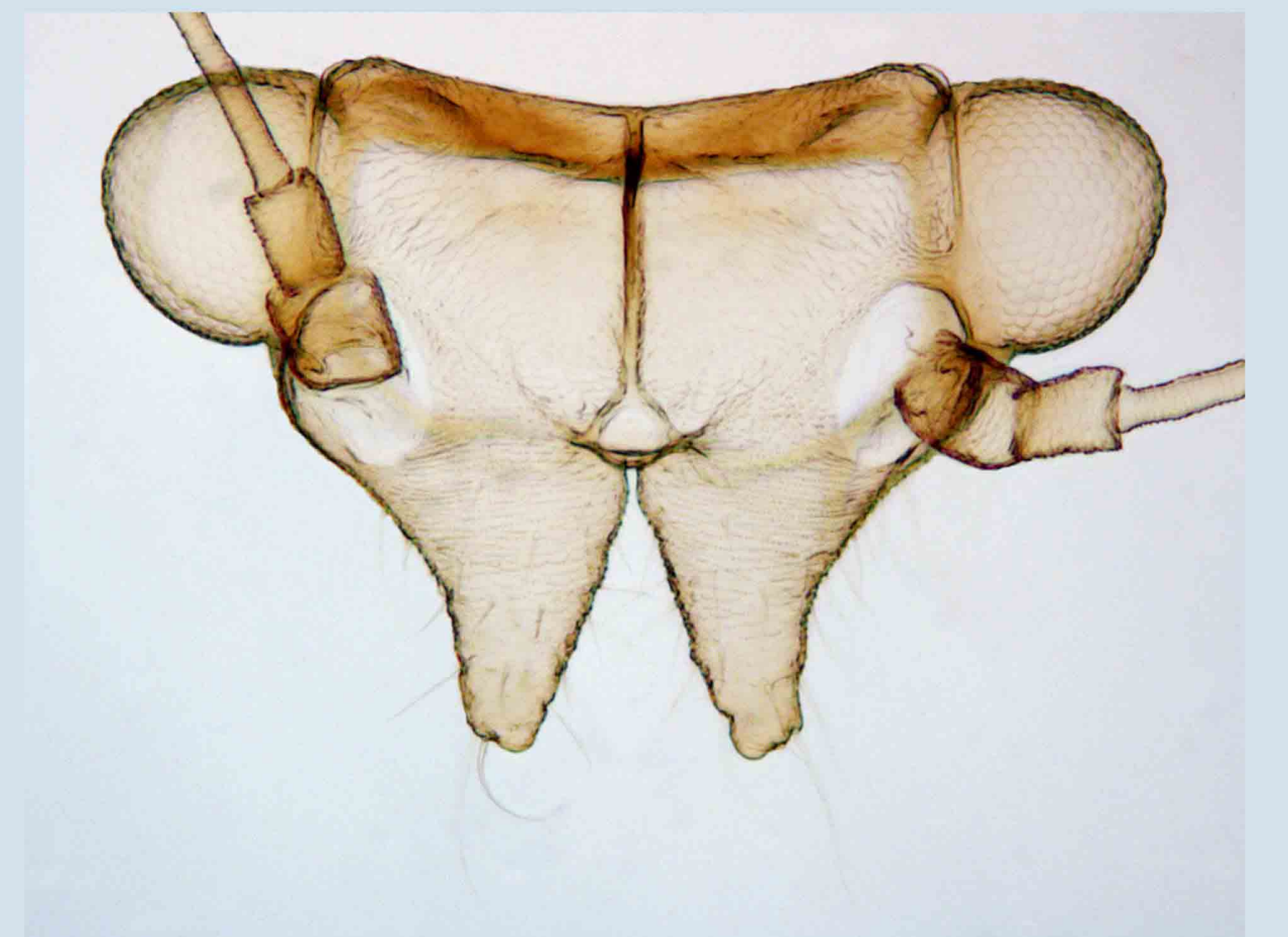
Wirtspflanzen: *Sorbus aucuparia*, *S. amurensis*, *Pyrus americana*



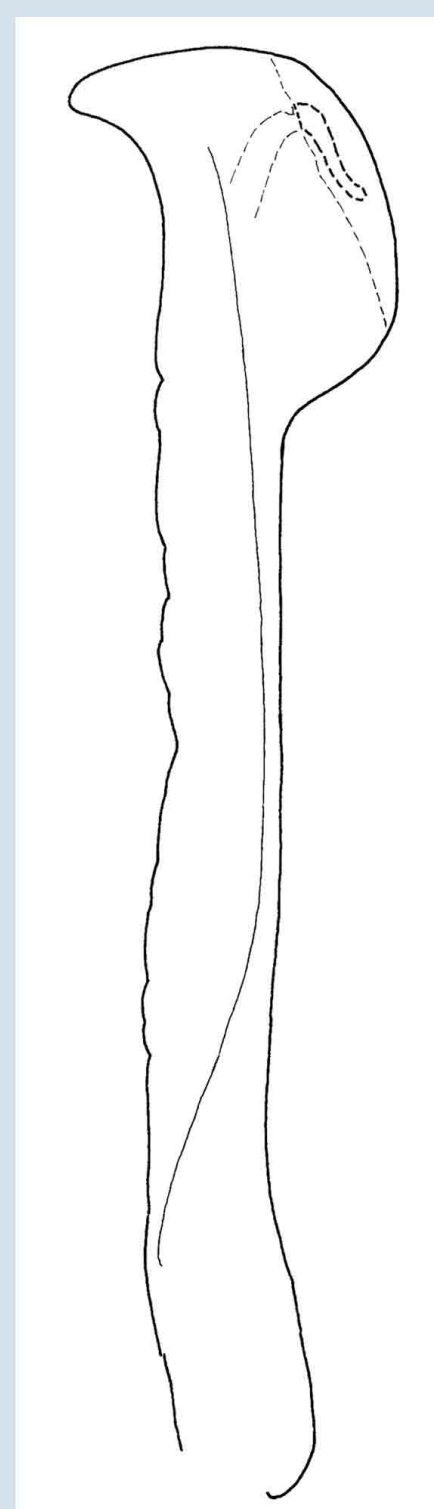
Larve



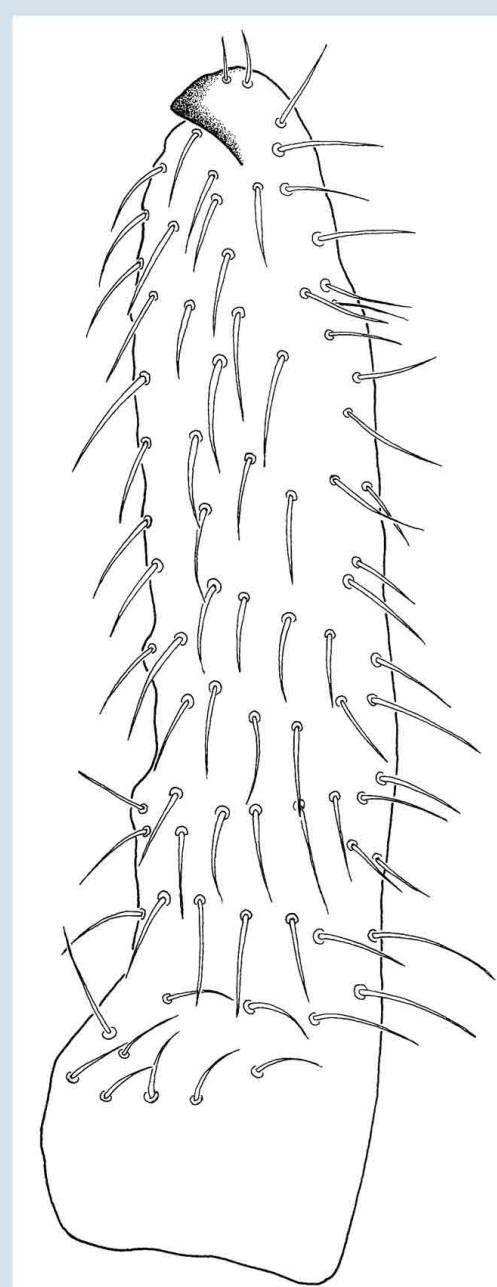
Adulttier (Weibchen)



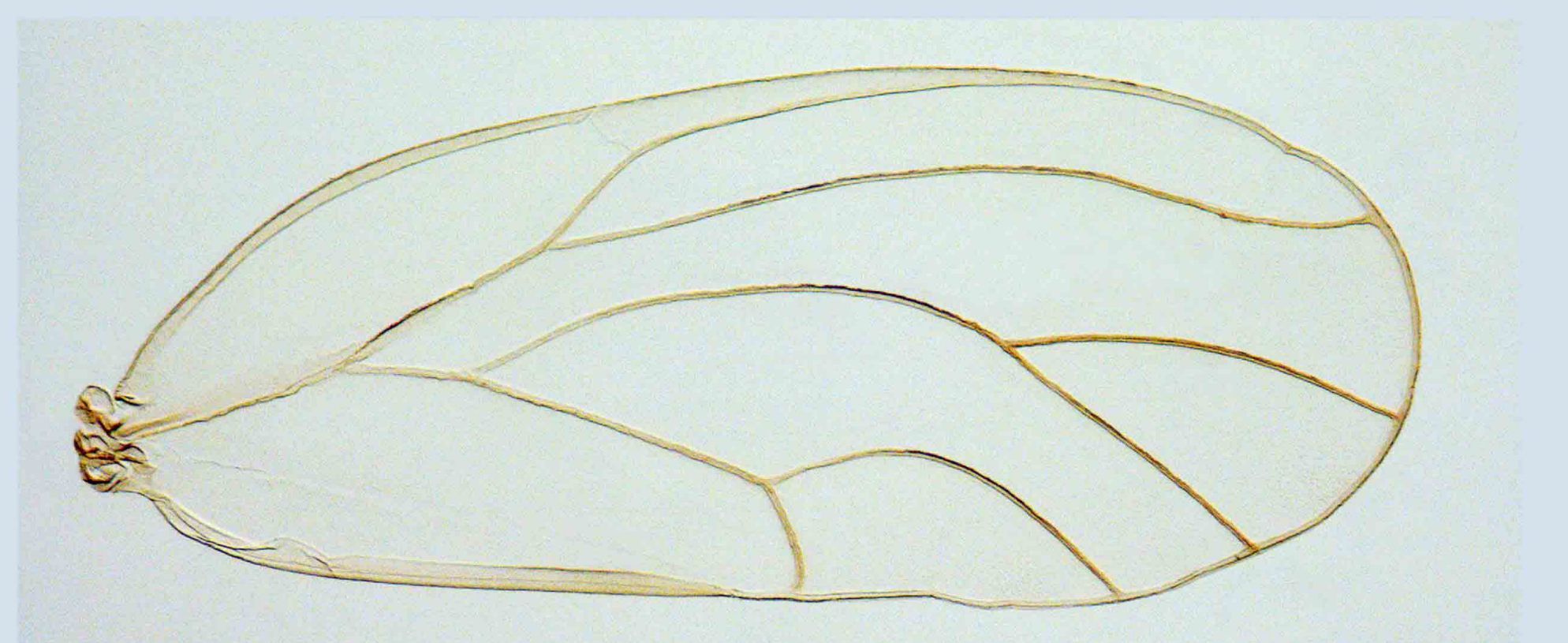
Kopf



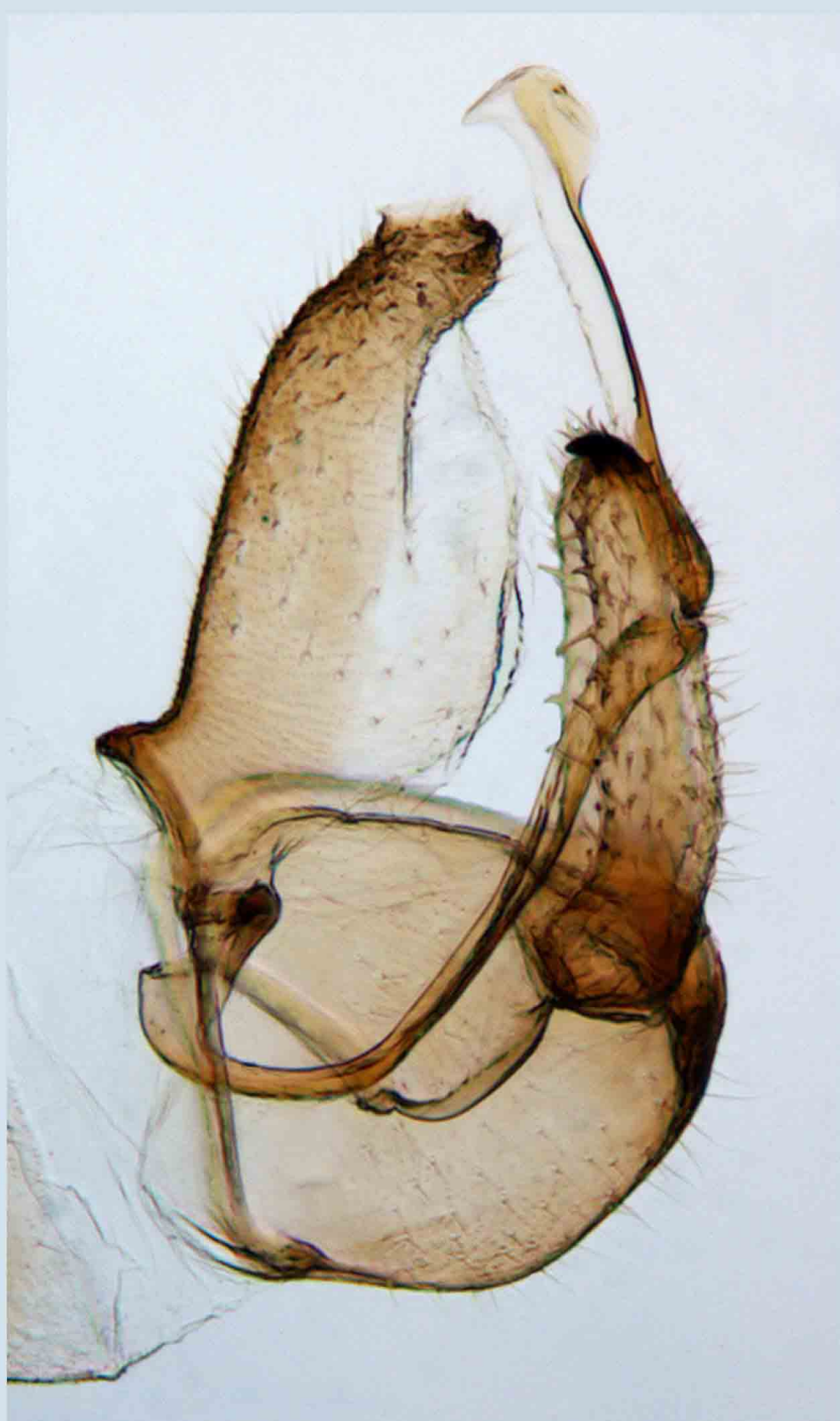
➔ Endglied des Aedeagus



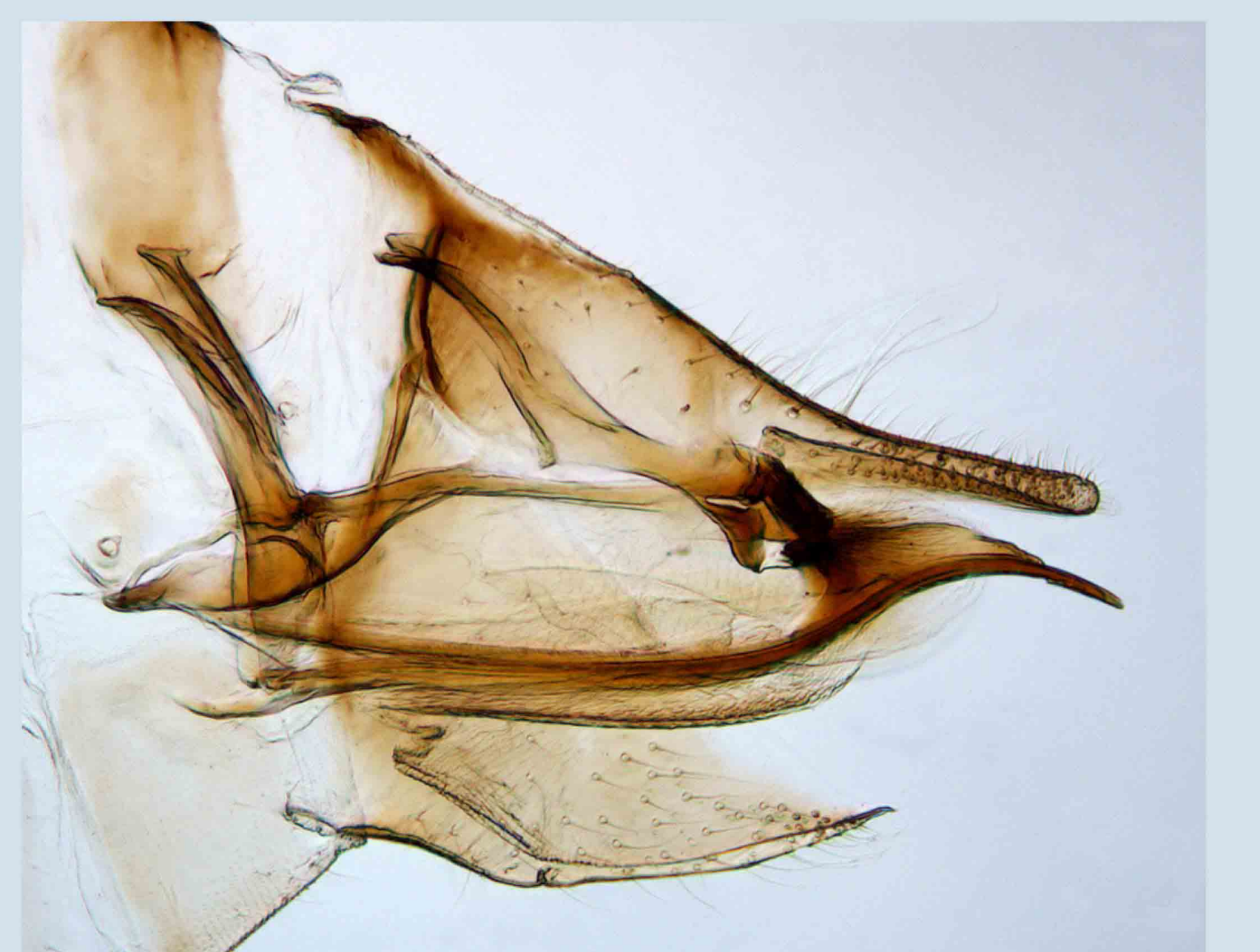
➔ Paramere



Vorderflügel



männliche Terminalien



weibliche Terminalien